

**DDAH2 Antibody**  
**Rabbit mAb**  
**Catalog # AP91799****Specification**

---

**DDAH2 Antibody - Product Information**

Application	WB, IP
Primary Accession	<a href="#">O95865</a>
Reactivity	Rat
Clonality	Monoclonal
<b>Other Names</b>	
DDAH; DDAH II; DDAH2; DDAHII; Dimethylargininase 2; G6a;	
Isotype	Rabbit IgG
Host	Rabbit
Calculated MW	29644 Da

**DDAH2 Antibody - Additional Information**

Dilution	WB~~1:1000 IP~~N/A
Purification	Affinity-chromatography
Immunogen	A synthesized peptide derived from human DDAH2
Description	Hydrolyzes N(G),N(G)-dimethyl-L-arginine (ADMA) and N(G)-monomethyl-L-arginine (MMA) which act as inhibitors of NOS. Has therefore a role in the regulation of nitric oxide generation.
Storage Condition and Buffer	Rabbit IgG in phosphate buffered saline , pH 7.4, 150mM NaCl, 0.02% sodium azide and 50% glycerol. Store at +4°C short term. Store at -20°C long term. Avoid freeze / thaw cycle.

**DDAH2 Antibody - Protein Information****Name** DDAH2 ([HGNC:2716](#))**Synonyms** DDAH, G6A, NG30**Function**

Putative hydrolase with unknown substrate (Probable). Does not hydrolyze N(G),N(G)-dimethyl-L-arginine (ADMA) which acts as an inhibitor of NOS (PubMed:<a href="http://www.uniprot.org/citations/21493890" target="\_blank">21493890</a>, PubMed:<a href="http://www.uniprot.org/citations/37296100" target="\_blank">37296100</a>). In endothelial cells, induces expression of vascular endothelial growth factor (VEGF) via phosphorylation of the transcription factor SP1 by PKA in a process that is independent of NO and NO synthase (By similarity). Similarly, enhances pancreatic insulin secretion through SP1-mediated

transcriptional up-regulation of secretagogin/SCGN, an insulin vesicle docking protein (By similarity). Upon viral infection, relocates to mitochondria where it promotes mitochondrial fission through activation of DNM1L leading to the inhibition of innate response activation mediated by MAVS (PubMed:<a href="http://www.uniprot.org/citations/33850055" target="\_blank">33850055</a>).

#### **Cellular Location**

Cytoplasm. Mitochondrion Note=Translocates from cytosol to mitochondrion upon IL1B stimulation in chondrocytes

#### **Tissue Location**

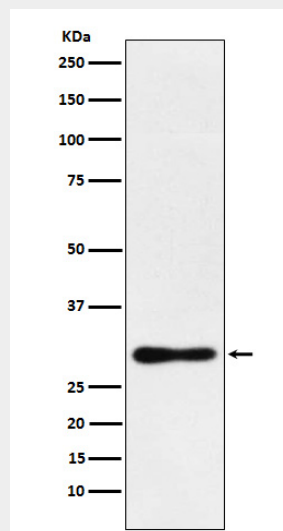
Detected in heart, placenta, lung, liver, skeletal muscle, kidney and pancreas, and at very low levels in brain

### **DDAH2 Antibody - Protocols**

Provided below are standard protocols that you may find useful for product applications.

- [Western Blot](#)
- [Blocking Peptides](#)
- [Dot Blot](#)
- [Immunohistochemistry](#)
- [Immunofluorescence](#)
- [Immunoprecipitation](#)
- [Flow Cytometry](#)
- [Cell Culture](#)

### **DDAH2 Antibody - Images**



Western blot analysis of DDAH2 expression in MCF7 cell lysate.